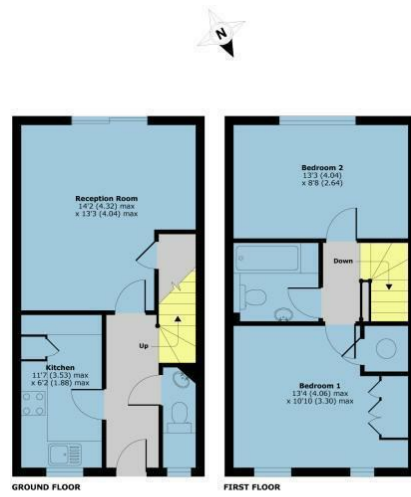




Lower Mount Street | Elvetham Heath | Fleet | GU51 1BN

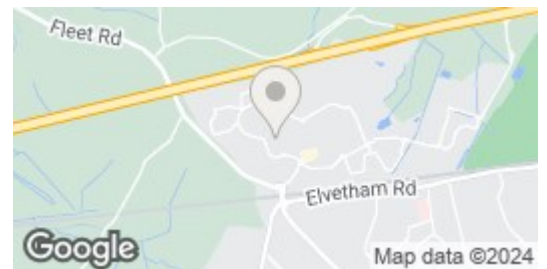
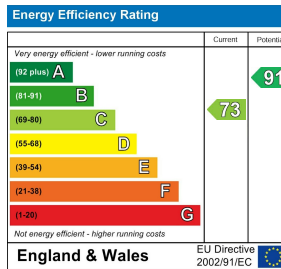
£1,450 PCM

Waterfords W
Residential Sales & Lettings



Copyright Romana 2011
120021

Gross Internal Floor Area
698 sqft / 64.8 sqm



Description

Waterfords are proud to present this two double bedroom mid terraced house, this house offers a family bathroom, fully fitted kitchen and good size living room. There is road parking and a garage plus a enclosed rear garden. No Smoking, No Pets, available unfurnished from 29th July 2024.

Key features

- Two double bedroom house
- Family bathroom and further WC
- Available from 29th July 2024
- Council Tax Band - D
- Fully fitted kitchen with appliances
- Garage and road parking
- Unfurnished
- EPC - C



39 The Hart Centre
Fleet
Hampshire
GU51 3LA
01252 623330
hampshirelettings@waterfords.co.uk
<https://www.waterfords.co.uk/>